

RECEIVED
LARAMIE COUNTY
CHEYENNE, WY.

'93 DEC 14 PM 1 40

CERTIFIED LAND CORNER RECORDATION

DESCRIPTION OF CORNER EVIDENCE FOUND, AND ORIGINAL RECORD (If known)

RECORD: EDWIN JAMES, U.S. DEPUTY SURVEYOR, JUNE 21, 1870

80.00 CHAINS SET A LIMESTONE 18 X 10 X 8 FOR CORNER TO SECTIONS No 12 & 13

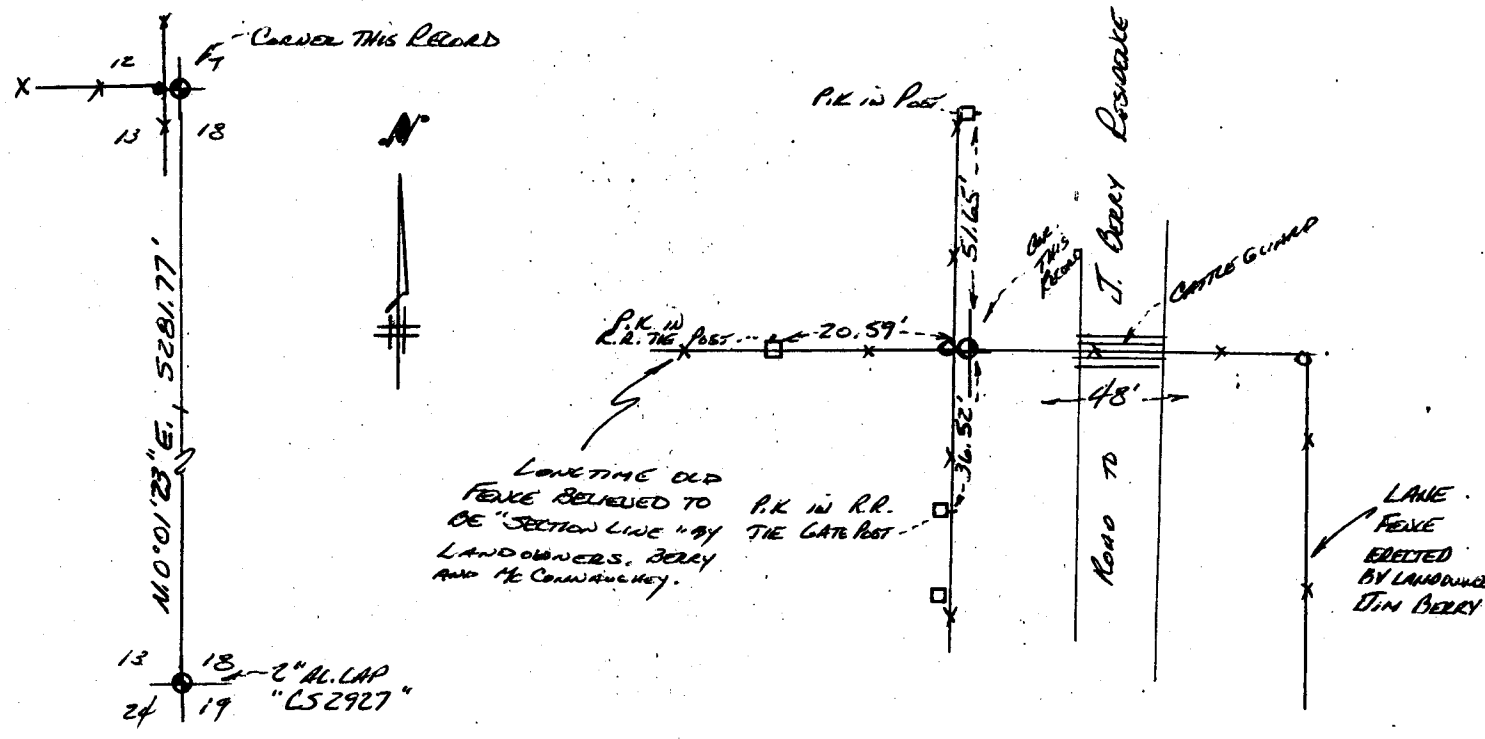
FOUND: NOTHING

DESCRIPTION OF MONUMENT AND ACCESSORIES ESTABLISHED TO PERPETUATE THE ORIGINAL LOCATION OF THIS CORNER:

SET: AT THE BASE OF A FENCE CORNER OF FENCES EXTENDING WEST, SOUTH AND NORTH IN LONG TIME USE AND ACCEPTED AS THE SECTION CORNER BY LANDOWNERS J. BERRY AND MCCONNAUGHEY, AND FOUND HARMONIOUS WITH CORNERS SOUTH. I SET A No. 5 X 24" LEADER WITH 2" ALUMINUM CAP MKD. → 18" IN THE GROUND WITH A SMALL HOUND OF SONS 1' DIA.

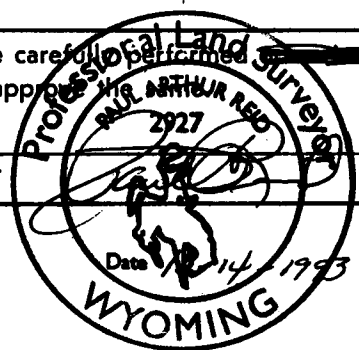
T. 16 N.
R. 65 W. 6^{SP}
LS 52927

SKETCH, WITH COURSE AND DISTANCE TO ADJACENT CORNER IF DETERMINED IN THIS SURVEY. (May Sketch or Paste Reproduction on Reverse Side.)



I, PAUL A. REID certify that I have carefully performed the work done on the diagrammed corner as reported on this recordation form and approved

Signature of Surveyor _____ Registration No. _____



STATE OF WYOMING,
Office of Clerk and Recorder,
County of _____

This "corner record" was filed for record on the _____ day of _____, 19____, was noted on the cross-index plat and is assigned page No. _____, in book No. _____.

County Official		
Cross Index No. <u>J-25</u>	T. <u>16 N.</u>	R. <u>65 W. 6^{SP}</u> Mer.
_____	T. _____	R. _____ Mer.
_____	T. _____	R. _____ Mer.
_____	T. _____	R. _____ Mer.
_____	T. _____	R. _____ Mer.
_____	T. _____	R. _____ Mer.
_____	T. _____	R. _____ Mer.